

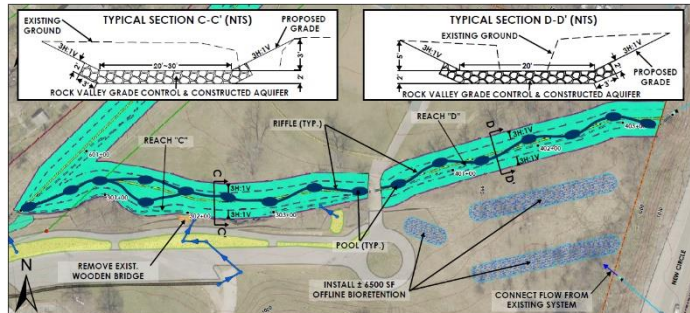
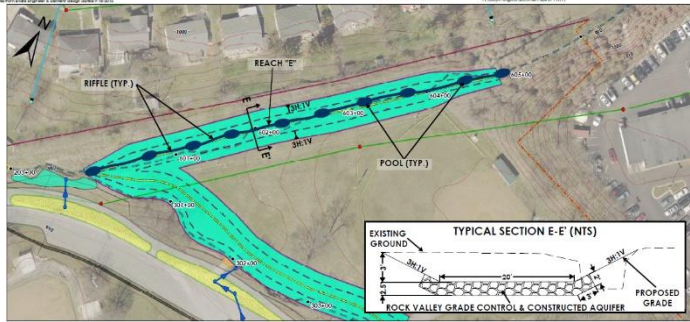
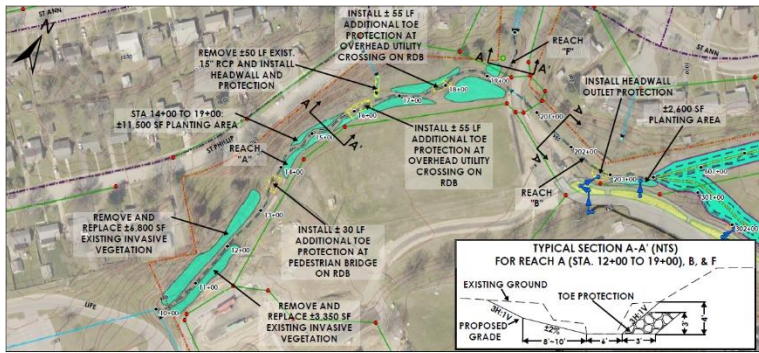


# Idle Hour Park Stream Feasibility Study

## Lexington, KY

### April - June, 2017

The design/build team of EcoGro, Stantec and Ridgewater was hired by the city of Lexington's Division of Environmental Services to assess an eroding waterway in Idle Hour Park. This park had recently updated some park amenities as well as a new Senior Center, which drew attention to the poor conditions of environmental components. The site had a dangerously incised ravine plus the only known patch of kudzu in Fayette County (otherwise rare in north-central Kentucky). Because the park is located in the upper West Hickman Creek watershed, interventions here could greatly benefit issues downstream. Our team was hired to document existing conditions, develop a hydrologic model of the watershed drainage area, propose conceptual remediation options and produce an itemized list of potential costs. Special consideration was given to strategies that could treat pollution from stormwater runoff, stabilize eroded banks and reduce runoff quantity.



[www.EcoGro.net](http://www.EcoGro.net)  
(859) 231-0500

P.O. Box 22273, Lexington, KY 40522